



SUSTAINABLE SEALERS TO IMPROVE AIR AND WATER QUALITY

Presented by :

www.SealGreen.com

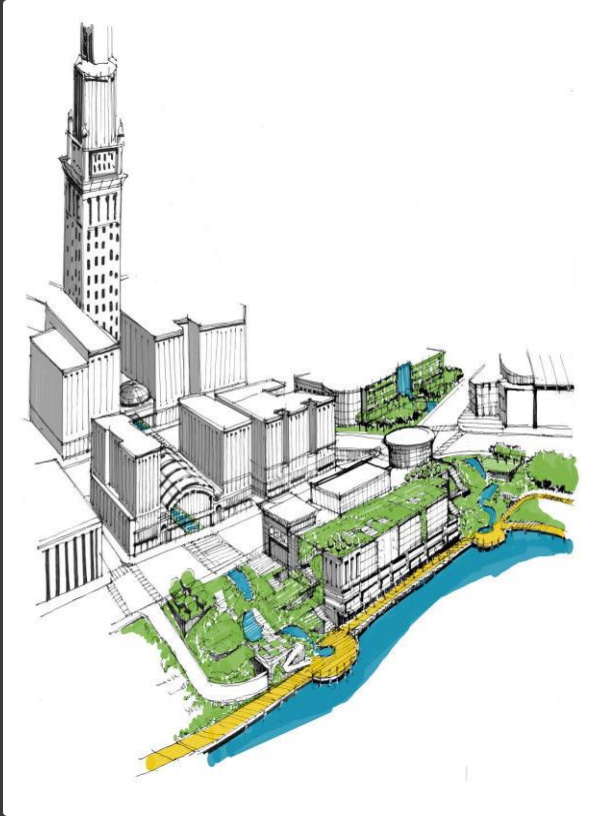


Featuring
SealGreen[®]
Environmentally Friendly
Concrete Cleaning & Sealing Products



As we seek to live healthier lives, we require structures that will be sustainable and constructed in the way that produces the least harm to our environment.

Urban Growth and Planning



Development with our air and water in mind



Careful planning and development to provide growth and sustainable living areas requires construction using materials with little or no impact to our environment (footprint) such as concrete.

**New concrete
installation**



**Curing
new concrete**



**Washing
concrete**



TEMPORARY SEALERS

.... Newly installed concrete is currently cured with solvent based acrylic sealers that break down over a period of 3 to 6 months. As these sealers break down they are washed into the drainage system and enter our water supply.

**Damaged
Concrete replacement**



**Concrete
Dumpsite**

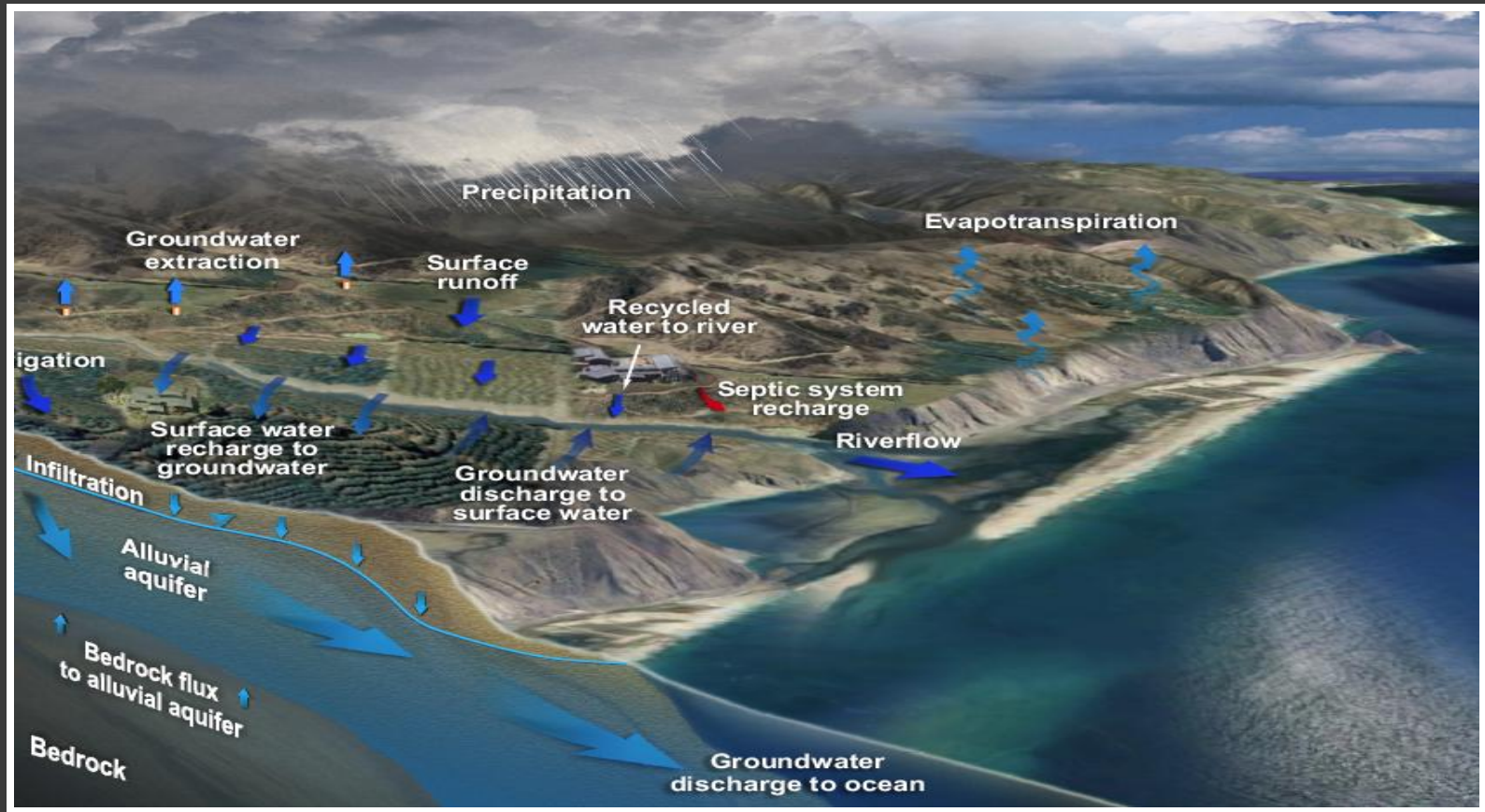


**Water table
impact**



CONCRETE REPLACEMENT

.... Large projects recycle the concrete into new construction. Smaller project send the concrete to dump sites because it is too expensive to recycle the concrete as new building material. Any chemicals in the waste concrete also enter the water supply.



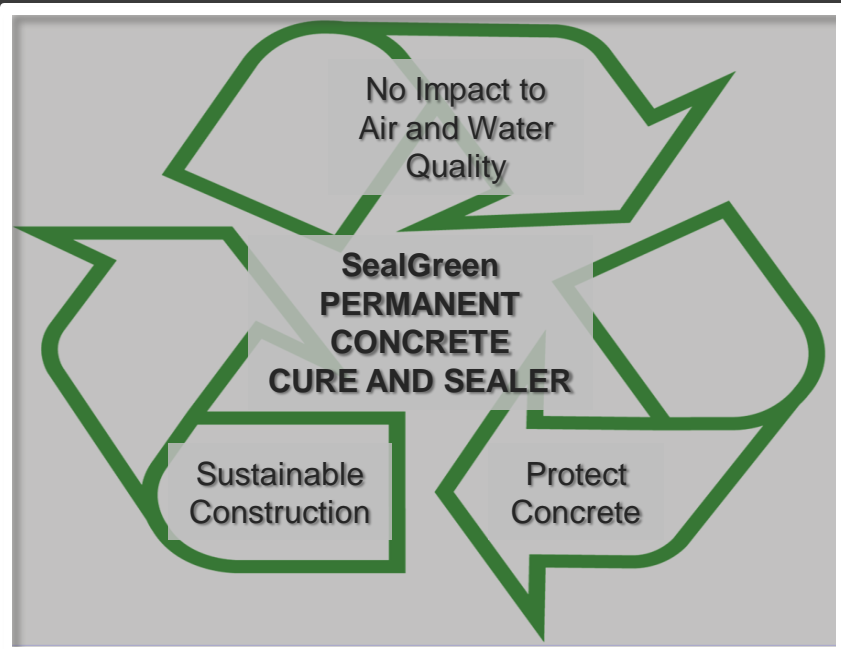
TEMPORARY CURE SEALERS IMPACT TO WATER

... As temporary sealers wash into our water supply there is a cumulative effect that could render our water unfit for drinking.



At **ReUse Concrete Sealing**

our concern for the quality of air and water in our environment resulted in extensive research and the development of a water based **Permanent Chemically Reactive Sealer** - the SealGreen product line.



Our Goal Is Threefold:

1. Cure and Protect Concrete (from initial installation to the end of its designated life)
2. Achieve Sustainable Construction
3. Protect Air and Water Supply

HOW DOES THE SEALGREEN CURE & SEAL WORK?

1. Cure & Seal is applied as a cure as the concrete is installed
2. Then Cure & Seal immediately chemically reacts to the cementitious part of the concrete and permanently fills the upper pores of the concrete.
3. The concrete is now sealed with a permanent cure retaining the moisture inside while allowing the concrete to breath and cure correctly.

Additional treatment of sealer should be applied 30 days after installation for an optimal seal. Topical coatings/sealers that can leach into the water and air are not needed.



1



2



3

WHY SEAL CONCRETE WITH SEALGREEN?



- ✓ Non-slippery surface – No shine
- ✓ Humidity Retention - Reduced Ground shifting
- ✓ Bonds already deteriorated concrete
- ✓ Reduce Cracking
- ✓ Reduces spalling and lignite pitting
- ✓ Reduces concrete dusting
- ✓ Protects rebar from rusting
- ✓ Reduces damage from salts and chemicals
- ✓ Easier to maintain and clean
- ✓ Easier to remove ice and snow
- ✓ Reduces freeze/thaw damage



*“The water and the air that we pollute today,
will be the air we breath and
the water that we will drink tomorrow”*

Contact us”

ReUse Concrete Sealing Specialists, LLC.

16072 Foster Street

Overland Park, KS. 66085

913-681-3451

www.SealGreen.com

Presented by :

